

aerosmith®
fastening systems

BLUE BANGER HANGER

CAST-IN-PLACE ANCHORS



oshpd



All reports listed below are owned by Tomarco /ISAT Construction Supplies



Cutaway View
Showing Multiple
Internal Threads

The Original, Patented
**BLUE BANGER
HANGER**

The Insert that Changed the Anchoring Industry!

- *Reduce labor costs*
- *Ideal for gravity & seismic anchorage*
- *Multiple internal threads reduces inventory*
- *Allows rod size changes after installation*
- *Internal threads eliminate costly couplings*
- *World class technical support*
- *Cracked concrete tested*
- *No special inspection*
- *Installs fast and secure*
- *No more drilling*

All reports listed below are owned by Tomarco / ISAT Construction Supplies

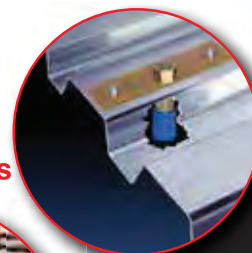


Patent Numbers

US 6,240,697 B1 and US 7,093,400 B1

***BUY AMERICAN COMPLIANT.
AVAILABLE BY SPECIAL REQUEST**

RDI
Roof Deck Insert



Accessories



PIP
Pour-in-Place Insert



Pole Tools



SDI
Steel Deck Insert



Authorized Wholesale Distributor
of the Blue Banger Hanger

aerosmith[®]
fastening systems

AerosmithFastening.com

844-373-2666 Toll Free

Project Examples



SDI - Steel Deck Insert

Pre-Poured Concrete Steel Deck Inserts



Shown with Flute Span Bracket



PIP - Poured-in-Place Insert

For Wood Form Concrete Decks



RDI - Roof Deck Insert

For No-Concrete Steel Decks



SDI - Steel Deck Insert

- No drilling concrete,
- No using rod couplers,
- No special inspection
- No installer error!

Pre-Poured Concrete Steel Deck Inserts

SDI's are installed prior to pouring, reducing installation and material costs and increasing strength values.

Machined Steel Insert with Large Flanged Head

- Provides excellent shear values for overhead attachments
- Insert installed height of two inches can be used through or between ribs
- Patented grooved insert body prevents component separation even if the flute is broken off prior to pour

Multiple Internal Threads

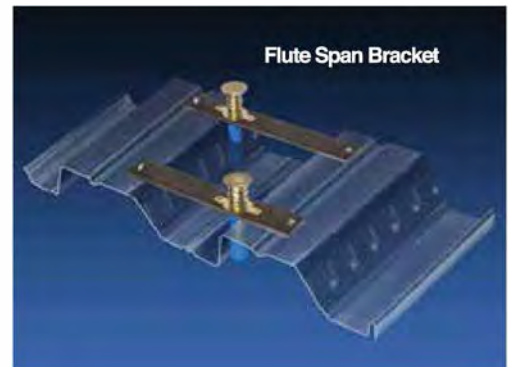
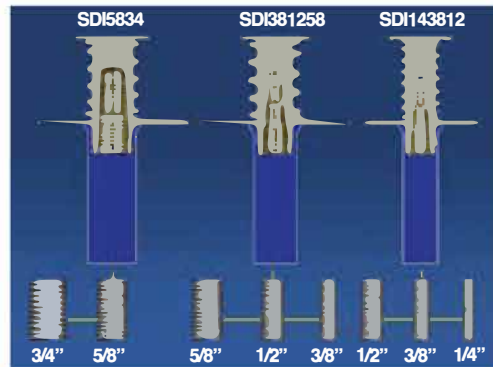
- Reduces inventory so three inserts can accommodate five threaded rod sizes
- Allows for threaded rod size changes after inserts are installed
- Internal threads eliminate the need and cost of couplings

Three Inch Blue Plastic Sleeve

- Keeps internal threads clean
- Extended length makes insert easy to locate even with fireproofing on deck underside
- Plastic sleeve provides guidance to align threaded rod with matching internal female threads
- UL plenum rated for use in air handling spaces

Flute Span Bracket

- Allows the SDI to be installed at the side of the flutes
- Enables the SDI to realize the higher capacity that is achieved in the upper flute
- Positions all inserts on the project at the same elevation to eliminate multiple all thread rod lengths and improve the accuracy of off site prefabrication



PART#	PART DESCRIPTION	HOLE DIA	BOX QTY
HEA-SDI143812	1/4", 3/8" and 1/2" Steel Deck Insert	13/16" - 7/8"	100
HEA-SDI381258	3/8", 1/2" and 5/8" Steel deck Insert	1-1/8" - 1-13/16"	50
HEA-SDI5834	5/8" and 3/4" Steel deck Insert	1-13/16" - 1-1/4"	50
HEA - FSBX	Universal Bracket		Bulk
SDI143812EBP	1/4", 3/8" and 1/2" SDI with Extended BasePlate	13/16" - 7/8"	Bulk
SDI1381258EBP	3/8", 1/2" and 5/8" SDI with Extended Base Plate	1-1/8" - 1-13/16"	Bulk
SDI5834EBP	5/8" and 3/4" SDI with Extended Base Plate	1-13/16" - 1-1/4"	Bulk

Add "BAA" to the end of the part number for the Buy American Act compliant insert

EASY 2-STEP INSTALLATION



1) Drill It



2) Bang It

The hammer blow must force the plastic sleeve thru the decking so it fully grips the bottom side to hold the insert vertical.

The spring pressure on the deck washer expands the plastic flange to create underside resistance so the insert withstands pre-pour impact and remains upright.

SEISMICALLY
QUALIFIED FOR
USE IN CRACKED
CONCRETE



The Original, Patented
**BLUE BANGER
HANGER**



IMPORTANT NOTE: Only Blue Banger Hangers with the ISAT head stamp are IBC compliant!

There's No Insert Like It Anywhere

Blue Banger Hangers are the insert of choice across the full spectrum of the construction industry and they're used extensively for the most complex and stringently enforced projects in the world including Hospitals, Biotech facilities, US Government projects, Educational facilities, and Airports just to name a few.

All reports listed below are owned by Tomarco / ISAT Construction Supplies

osbpd

UL Approved File
Number E240801



PIP - Pour-in-Place Insert*

***BUY AMERICAN COMPLIANT.
AVAILABLE BY SPECIAL REQUEST**

For Wood Form Concrete Decks

Pour-in-Place inserts are used on wood form poured decks and installed prior to pouring concrete, reducing installation and material costs. Nails Easily Break off.

Machined Steel Insert with Large Flanged Head

- Provides excellent shear values for overhead attachments
- Insert installed height of two inches complies with typical design specifications

Multiple Internal Threads

- Reduces inventory so three inserts can accommodate five threaded rod sizes
- Allows for threaded rod size changes after inserts are installed
- Internal threads eliminate the need and cost of couplings

Plastic Attachment Inserts with Nails

- Blue plastic ring acts as insert locator when forms are removed
- Plastic ring creates countersunk recess to keep threads clean from pour residue
- UL plenum rated for use in air handling spaces



Nails break off when form is removed with just a swipe of the hammer



**3 INSERTS
ACCOMMODATE
5 THREADED
ROD SIZES**



PART#	PART DESCRIPTION	BOX QTY
HEA-PIP143812	1/4", 3/8" and 1/2"	200
HEA-PIP381258	3/8", 1/2" and 5/8"	150
HEA-PIP5834	5/8" and 3/4"	150
CEA - PIPInstallwide	Poured-in-Place Tool	1

Add "BAA" to the end of the part number for the Buy American Act compliant insert



The Original, Patented
**BLUE BANGER
HANGER**

Blue Banger Hangers have been engineered to save you time and money and are backed by industry leading test approvals design and application engineering. Each insert handles multiple threaded rod diameters and installs in a fraction of the time of post installed anchors. Blue Banger Hangers are the insert of choice for Mechanical, Plumbing, Fire Sprinkler and Electrical contractors.

***BUY AMERICAN COMPLIANT.
AVAILABLE BY SPECIAL REQUEST**

- **No special inspection**
- **Installs fast and secure**
- **Fully cracked concrete tested for vertical and dynamic seismic loading**
- **Backed By: ICC Report ESR-3599 Granted Under AC446**

All reports listed below are owned by Tomarco / ISAT Construction Supplies



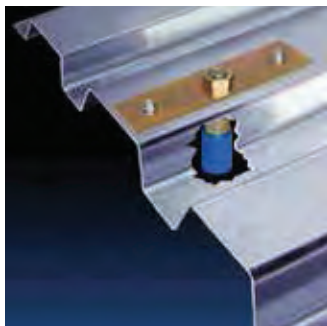
RDI - Roof Deck Insert

For No-Concrete Steel Decks

Roof Deck Insert anchors have a low profile attachment plate that does not protrude into roofing membrane. Fully assembled for field installation including prestaked deck screws.

Benefits

- Low profile attachment plate does not protrude into roofing membrane
- Fully assembled for quick field installation - including pre-staked deck screws
- Vertical support loads of 300 lbs in 20 gauge deck
- Designed for install on top or bottom of deck flute
- Reduces inventory so one inserts can accommodate three threaded rod sizes
- Allows for threaded rod size changes after inserts are installed
- Internal threads eliminate the need and cost of couplings
- UL plenum rated for use in air handling spaces



Easy Installation

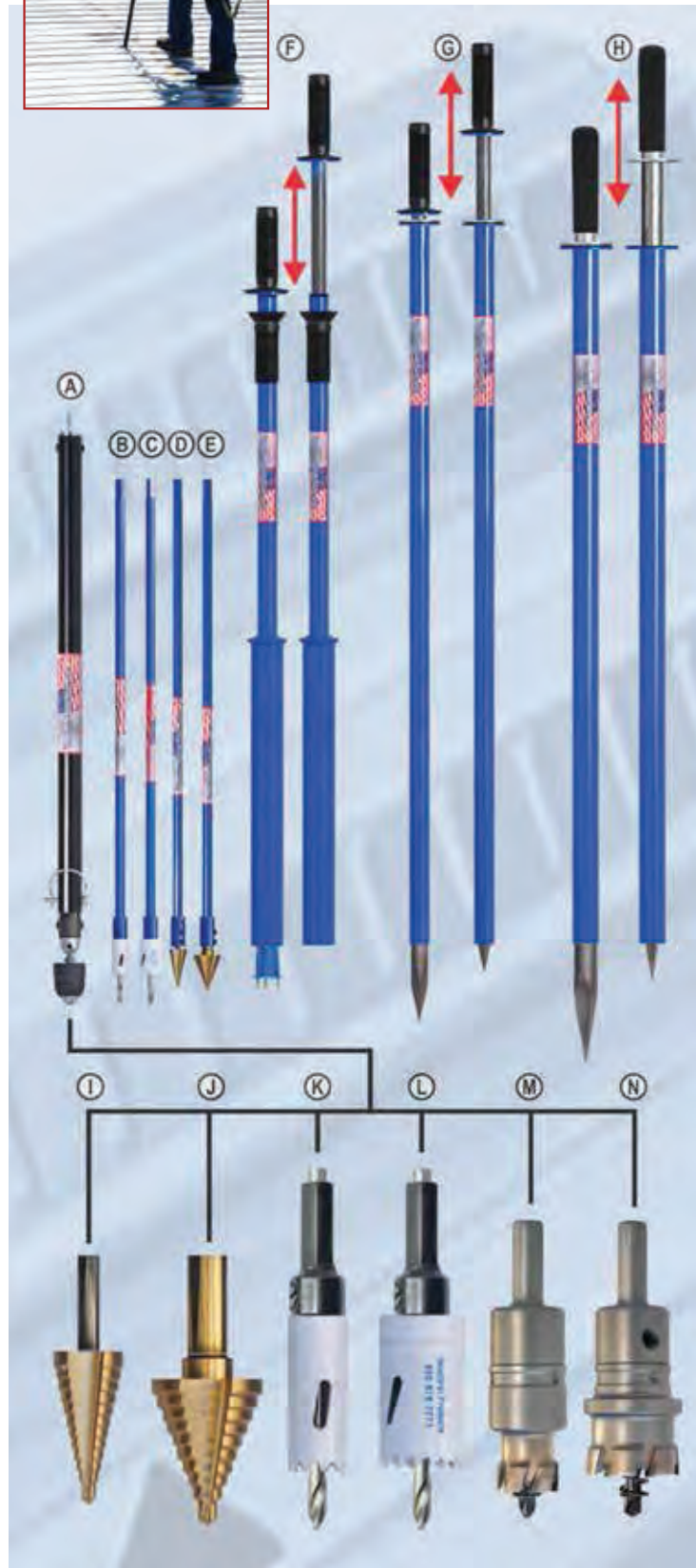
- Step 1 - Drill or Punch Access hole
- Step 2 - Insert RDI Roof Deck Insert
- Step 3 - Thread Pre-Staked Screws Into Deck

PART#	PART #	HOLE DIA	BOX QTY
RDI143812	1/4", 3/8" and 1/2" Roof Deck Insert	13/16" - 7/8"	50
Add "BAA" to the end of the part number for the Buy American Act compliant insert			

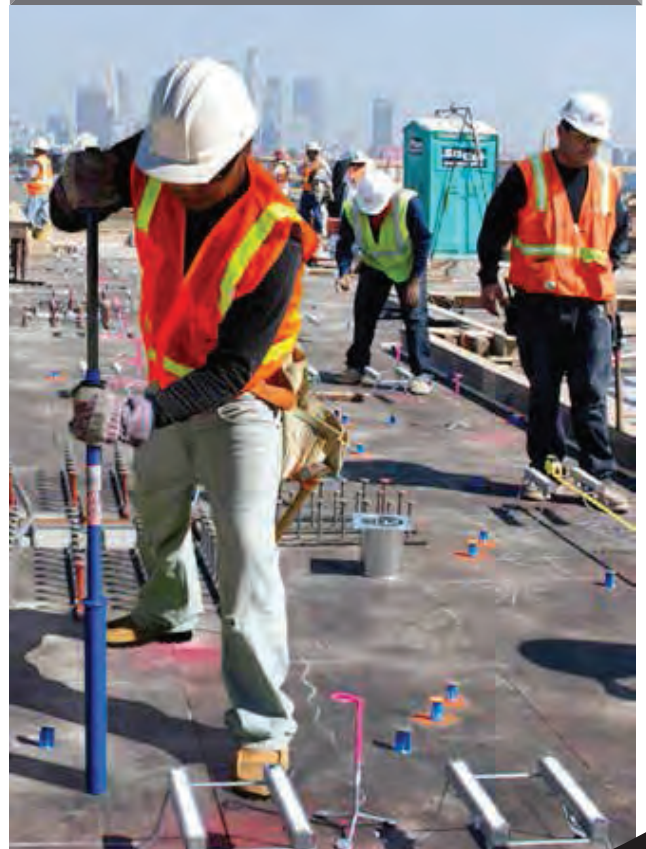


Installation Solutions

Pole Tools & Accessories



PART#	DESCRIPTION	
A	POLMKEY36	3'-6" Telescoping Install Tool w/Keyless Chuck
B'	SDDHS1	30" Deck Driller with 13/16" Hole Saw
C'	SDDHS2	30" Deck Driller with 1-3/16" Hole Saw
D'	SDDSB4	30" Deck Driller with 3/16" - 7/8" Step Bit
E'	SDDSB5	30" Deck Driller with 1/4" - 1-3/8" Step Bit
F'	CEA-PIPINSTALL1	Bazooka PIP Install Tool
F"	CEA-PIPINSTALL2	Bazooka PIP Install Tool
G'	CEA-BBDP1	13/16" Deck Punch
H'	CEA-BBDP2	1-3/16" Deck Punch
CEA-PIPINSTALLWIDE POUR IN PLACE TOOL 2 WIDE		
I'	SB4	3/16" - 7/8" Step Bit
J'	SB5	1/4" - 1-3/8" Step Bit
K'	HS1	13/16" Hole Saw Only
L'	HS2	1-3/16" Hole Saw Only
K&L	HSA	Arbor for Hole Saw Only
M'	HSC1	13/16" Carbide Tip Hole Saw Only
N'	HSC2	1-3/16" Carbide Tip Hole Saw Only
M&N	HSCA	Arbor for Carbide Tip Hole Saw Only
1 For use with HEA-SDI143812 and RDI143812		
2 For use with HEA-SDI381258 and RDI5834		
3 For use with HEA-PIP143812 only		
4 For use with HEA-PIP143812, HEA-PIP381258& HEA- PIP5834		





revised date 01/2023

🌐 www.aerosmithfastening.com

☎ Toll Free (844) 373-2666

Aerosmith Fastening System

📍 5621 Dividend Road,
Indianapolis, Indiana 46241

📞 (317) 390-6980

✉ questions@aerosmithfastening.com