



America's #1
Original, Patented

aerosmith[®]
fastening systems

www.aerosmithfastening.com
Phone: Toll Free 1-844-373-2666

DECK ANCHOR

INSERTS

- Concrete Steel Decks
- Wood-Formed Concrete Decks
- No Concrete Steel Decks

Engineered to Save You Time and Money!



aerosmith[®]
fastening systems

www.aerosmithfastening.com
Phone: Toll Free 1-844-373-2666

V1.0

The Original, Patented Blue Banger Hangers

The Original Patented Inserts that Changed the Anchoring Industry

Blue Banger Hangers have been engineered to save you time, money and are backed by industry leading test approvals and application engineering. Each insert handles multiple threaded rod diameters and installs in a fraction of the time of post installed anchors. Blue Banger Hangers are the insert of choice across the full spectrum of the construction industry including mechanical, electrical, plumbing, piping and fire sprinkler contractors.

Backed By Industry Leading Test Approvals

- Cracked concrete tested for vertical and dynamic seismic loading
- Backed by: ICC report ESR-3599 granted under AC446

Engineered To Save You Time And Money

- Multiple internal threads support different threaded rod sizes
- Reduces inventory
- Allows for threaded rod size changes after inserts are installed
- Internal threads eliminate the need and cost of couplings

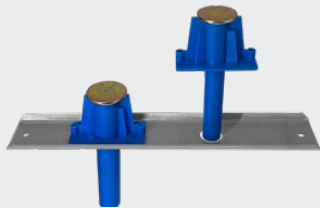


US Pat #'s
6,240,697 B1
7,093,400 B1

Blue Banger Hanger Product Index



SDI-2
Steel Deck Insert
For use with steel
concrete decks



FSB-X
Flute Span Bracket
Use when installing SDI-2
between steel flutes



PIP
Poured-in-Place Insert
For use with wood-formed
concrete decks



RDI
Roof Deck Insert
For use with no concrete
steel decks



PIP38
Poured-in-Place Insert
For use with wood-formed
concrete decks

- Reduces Inventory
- Installs Fast & Secure
- Easily Change Rod Sizes
- No Drilling Concrete
- No Using Rod Couplers
- No Special Inspection
- No Installer Error

Revolutionary Patented Insert Design Beyond the Blue Banger Hanger

US Pat #
US 9,181,691 B2



The Insert that Changed the Anchoring Industry Just Got Even Better

The Push Rod Hanger Inserts were engineered from the original, patented Blue Banger Hanger. The Push Rod overhead attachment system features a revolutionary patented auto-lock chamber that locks in threaded rod. Installers will quickly realize the benefits of simply pushing threaded rod into the Push Rod auto-lock insert instead of turn threading.

Patented Push Rod ATR

Factory Crimped Engagement Markings

The Push Rod ATR include patented engagement markings that confirm full engagement. No second guessing, no installer error. Plus, just like the Blue Banger Hangers, Push Rod Hangers reduce inventory because each insert accommodates multiple rod sizes that can be changed after installation.

How's that for innovation?

Factory Crimped Engagement Markings (Optional)



Takes the guess work out of installation

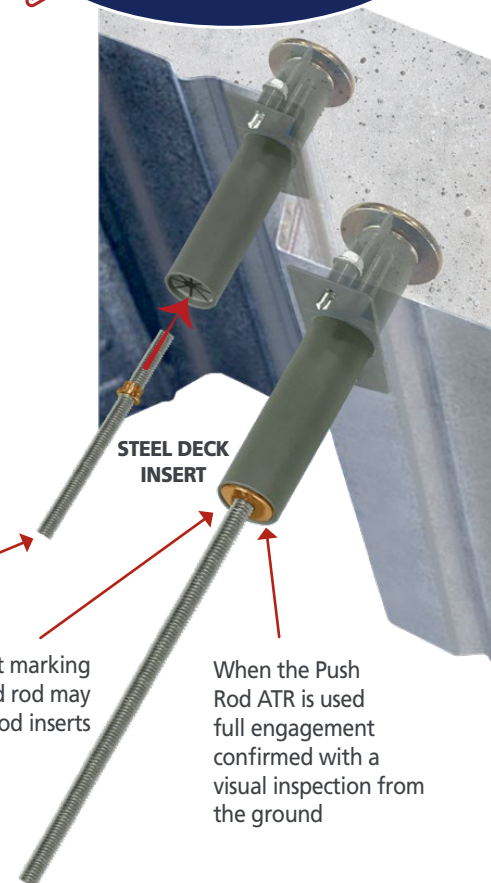
NO INSTALLER ERROR

Factory preassembled rods with engagement markings

Insert threaded rod until it bottoms out in the insert body

Threaded rod with engagement marking is optional. Standard threaded rod may be used for all Push Rod inserts

Refer to ESR-3599 for full installation instructions



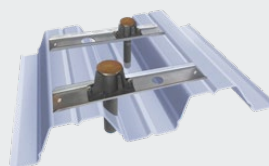
Push Rod Hanger Product Index



PRSDI-2
Steel Deck Insert
For use with steel concrete decks



PRPIP
Poured-In-Place
For wood-formed concrete decks



FSB-X
Flute Span Bracket
Use when installing PRSDI-2 between steel flutes



1/2" & 3/8"
Push Rod ATR
Use with PRSDI-2 or PRPIP



1/2" & 3/8"
Push Rod ATR Stud
Use with PRSDI-2 or PRPIP

aerosmith®
fastening systems

www.aerosmithfastening.com
Phone: Toll Free 1-844-373-2666

- Reduces Inventory
- Installs Fast & Secure
- Easily Change Rod Sizes
- No Drilling Concrete
- No Using Rod Couplers
- No Special Inspection
- No Installer Error



aerosmith®
fastening systems

SDI-2 - Steel Deck Insert

For Pre-Poured Concrete Steel Decks

The new SDI-2 is ICC qualified for W3 and B Decks with concrete topping down to 1-1/2" when installed in lower flute and 2-1/2" when installed in the upper flute. SDIs are installed prior to pouring, reducing installation and material costs while increasing strength values (ideal for gravity and seismic anchorage).

Multiple Internal Threads

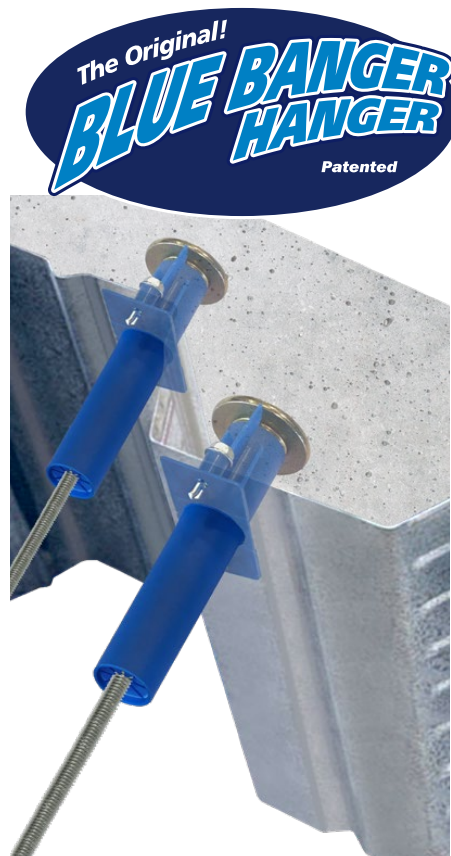
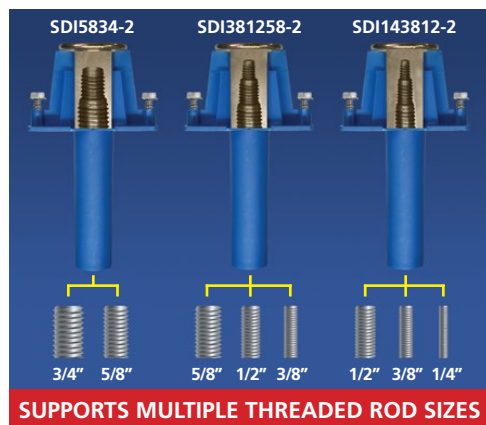
- Allows for threaded rod size changes
- Eliminate the need for, and cost of, couplings

Machined Steel Insert with Large Flanged Head

- Provides excellent pullout capacity for overhead attachments
- Qualified for use in W-deck and B-deck
- Improved shallow topping slab requirements (1-1/2" when installed in lower flute, 2-1/2" when installed in upper flute)

Three Inch Plastic Sleeve

- Keeps internal threads clean
- Extended length makes insert easy to locate, even with fireproofing below the deck
- Plastic sleeve provides guidance to align threaded rod with internal threads



Part #	Rod Sizes	Description	Hole Dia.	Box Qty.
SDI143812-2	1/4", 3/8", 1/2"	Steel Deck Insert	13/16" - 7/8"	50
SDI381258-2	3/8", 1/2", 5/8"	Steel Deck Insert	1-1/8" - 1-13/16"	50
SDI5834-2	5/8", 3/4"	Steel Deck Insert	1-13/16" - 1-1/4"	50
SDI143812EBP-2	1/4", 3/8", 1/2"	Extended Base Plate	13/16" - 7/8"	Bulk
SDI1381258EBP-2	3/8", 1/2", 5/8"	Extended Base Plate	1-1/8" - 1-13/16"	Bulk
SDI5834EBP-2	5/8", 3/4"	Extended Base Plate	1-13/16" - 1-1/4"	Bulk

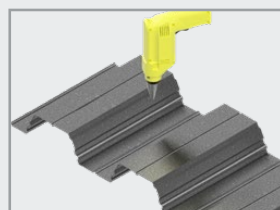
Add "BAA" to the end of the part number for the Buy American Act compliant insert



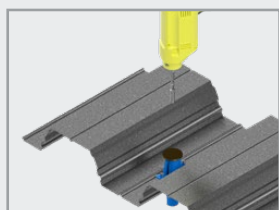
Improved load values
when installed in center
of deck flute



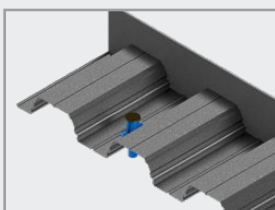
Easy Installation (See Installation Tools - Page 7)



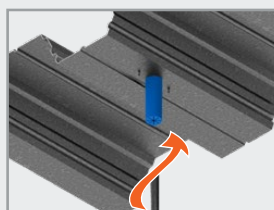
Drill it



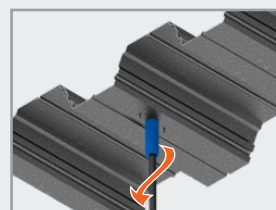
Screw to Deck



Pour Concrete



Thread Rod



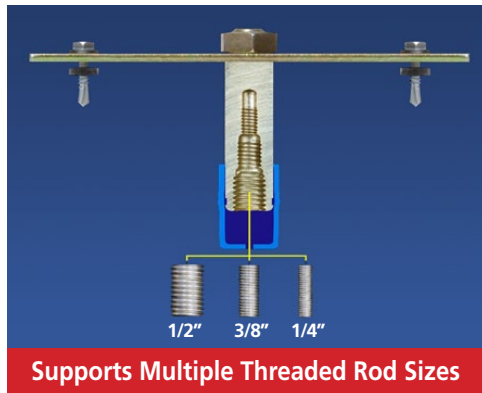
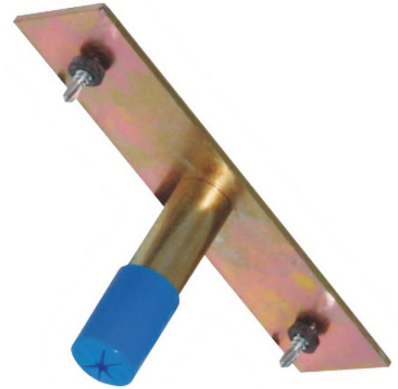
Change Rod Sizes
(ATR can be changed
after installation)

RDI - Roof Deck Insert

For No-Concrete Steel Decks

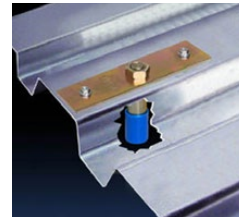
Roof Deck Insert anchors have a low profile attachment plate that does not protrude into roofing membrane. Fully assembled for field installation including pre-staked deck screws.

- Low profile attachment plate does not protrude into roofing membrane
- Fully assembled for quick field installation including pre-staked deck screws
- Vertical support loads of 300 lbs in 20 gauge deck
- Designed for installation on top or bottom of deck flute



Easy Installation

- Drill or punch access hole
- Insert RDI roof deck insert
- Thread pre-staked screws into deck



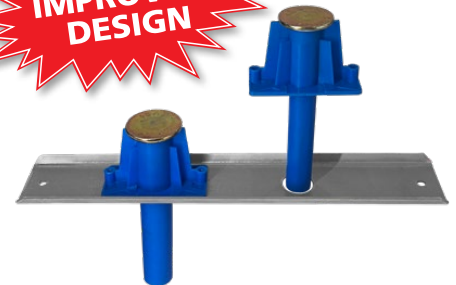
Part #	Rod Sizes	Description	Hole Dia.	Box Qty.
RD1143812	1/4", 3/8", 1/2"	Roof Deck Insert	13/16" - 7/8"	50
Add "BAA" to the end of the part number for the Buy American Act compliant insert				

FSB-X - Flute Span Bracket

NEW One FSB-X Now Fit All Size SDI-2 Blue Banger Hangers

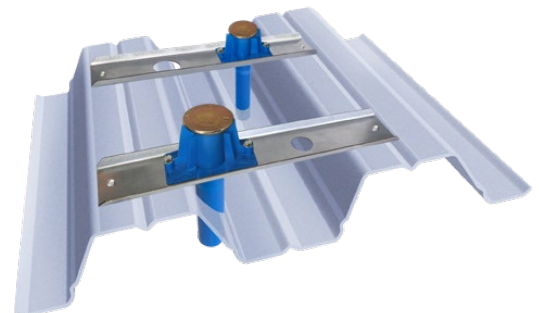
Allows the SDI-2 to be installed on the inside of the flutes!

- Enables the insert to realize the higher capacity that is achieved in the upper flute
- Positions all inserts on the project at the same elevation to eliminate multiple threaded rod lengths
- Improves the accuracy of off site prefabrication
- Fits all size Blue Banger Hanger brand SDI-2 inserts



Fits All Insert Sizes SDI-2 and PRSDI-2

Part #	Description	Box Qty.
FSBX	Flute Span Bracket	25



PIP - Poured-In-Place

For Wood Formed Concrete Decks

Pour-in-Place inserts are used on wood form poured decks and installed prior to pouring concrete, reducing installation and material costs.

Multiple Internal Threads

- Allows for threaded rod size changes
- Eliminate the need for, and cost of, couplings

Large Plastic Base with Slurry Seal

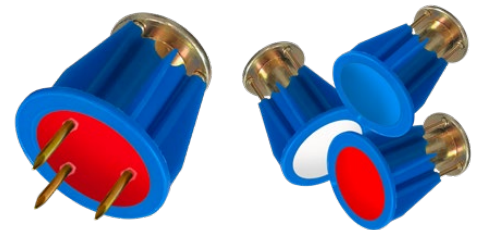
- Angled ridges protect the head of the insert from rebar during deck work
- Larger plastic base ensures that the insert is installed flush to the deck to prevent concrete from contaminating the inner threads during the pour
- Slurry seal safeguards the internal threads during the concrete pour
- Red, white and blue colored slurry seal labels identify the insert when used by multiple trades

Machined Steel Insert with Large Flanged Head and Nails

- Provides excellent shear values for overhead attachments
- Insert installed height of two inches complies with typical design specifications
- Nails easily break off

Part #	Rod Sizes	Description	Box Qty.
PIP143812RED	1/4", 3/8", 1/2"	Poured-In-Place Insert	100
PIP143812WHITE	1/4", 3/8", 1/2"	Poured-In-Place Insert	100
PIP143812BLUE	1/4", 3/8", 1/2"	Poured-In-Place Insert	100
PIP381258RED	3/8", 1/2", 5/8"	Poured-In-Place Insert	100
PIP381258WHITE	3/8", 1/2", 5/8"	Poured-In-Place Insert	100
PIP381258BLUE	3/8", 1/2", 5/8"	Poured-In-Place Insert	100
PIP5834RED	5/8", 3/4"	Poured-In-Place Insert	100
PIP5834WHITE	5/8", 3/4"	Poured-In-Place Insert	100
PIP5834BLUE	5/8", 3/4"	Poured-In-Place Insert	100

Add "BAA" to the end of the part number for the Buy American Act compliant insert



Easily Identify Multiple Trades



55% Larger 2-3/8" Base
Compared to Typical Competitor
Small 1-5/16" - 1-1/2" Base



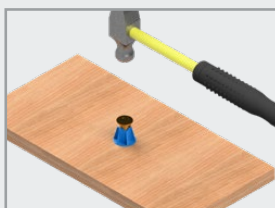
Angled Edges Help
Prevent Damage
Caused by Rebar



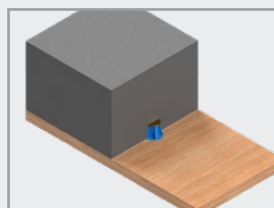
Slurry Seal
Prevents Concrete
Contamination



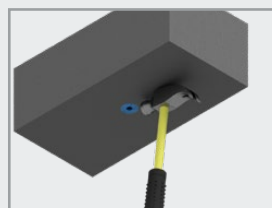
Easy Installation (See Installation Tools - Page 7)



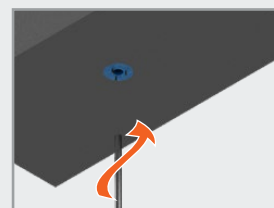
Hammer to Wood Form



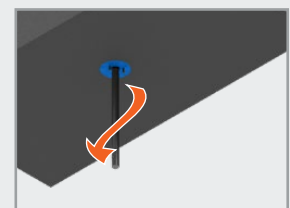
Pour Concrete



Remove Wood Form
and Break Off Nails



Thread Rod



Change Rod Sizes
(ATR can be changed after
installation)

Baby BLUE BANGER HANGER

PIPM38 - Poured-In-Place
For Wood Formed Concrete Decks



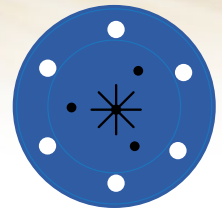
**WIDE
BASE**

- Virtually Eliminates Failures
- Supports 3/8" Threaded Rod
- Approved for Seismic Applications

It's All About That Base



HILTI®
1-1/4" Base



Baby Blue
2" Base

**38%
SMALLER**

- Fits Under Rebar
- Low Profile Prevents Snags
- Wider Base

Part #	Rod Size	Description	Box Qty.
PIPM38	3/8"	Poured-In-Place Insert	200
Add "BAA" to the end of the part number for the Buy American Act compliant insert			

**RECESSED
NAILS**



- Recessed Nails for Safety
- Nails Easily Break Off After Form Removal



PRSDI-2 - Steel Deck Insert

For Pre-Poured Concrete Steel Decks

The new PRSDI-2 is ICC qualified for W3 and B Decks with concrete topping down to 1-1/2" when installed in lower flute and 2-1/2" when installed in the upper flute. PRSDI-2's are installed prior to pouring, reducing installation and material costs while increasing strength values (ideal for gravity and seismic anchorage).

Multiple Internal Threads

- No threading - simply push rod (installs fast and secure)
- Fits both 3/8" and 1/2" threaded rod - reduces inventory
- Allows for threaded rod size changes
- Eliminate the need for, and cost of, couplings

Patented Push Rod ATR (Optional)

- Engagement markings confirm full engagement (eliminates guessing)
- Allows for visual inspection to verify rod is installed correctly

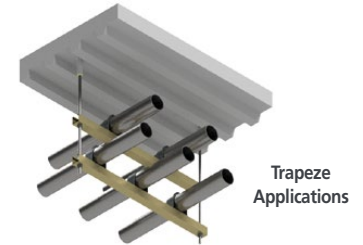
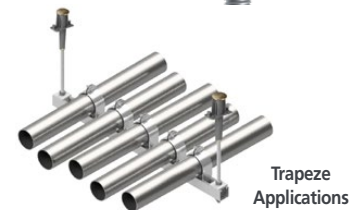
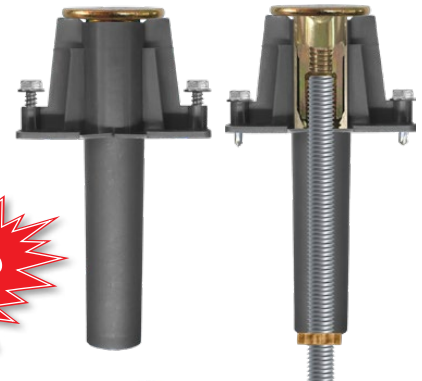
Machined Steel Insert with Large Flanged Head

- Provides excellent pullout capacity for overhead attachments
- Qualified for use in W-deck and B-deck
- Improved shallow topping slab requirements (1-1/2" when installed in lower flute, 2-1/2" when installed in upper flute)

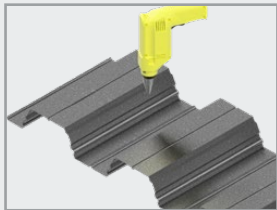
Three Inch Plastic Sleeve

- Keeps internal threads clean
- Extended length makes insert easy to locate, even with fireproofing below the deck
- Plastic sleeve provides guidance to align threaded rod with internal autolock chamber

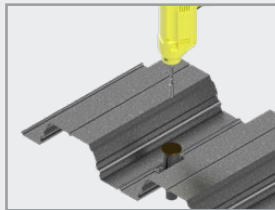
Part #	Rod Sizes	Description	Hole Dia.	Box Qty.
PRSDI3812	3/8", 1/2"	Push Rod Steel Deck Insert	1-1/8" - 1-13/16"	50
Add "BAA" to the end of the part number for the Buy American Act compliant insert				



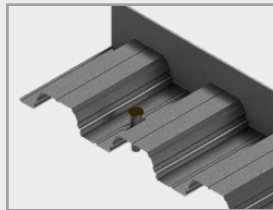
Easy Installation (See Installation Tools - Page 7)



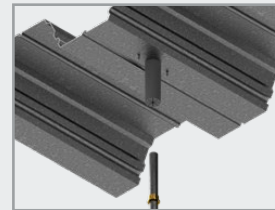
Drill it



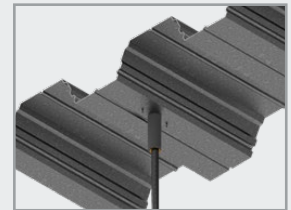
Screw to Deck



Pour Concrete



Push Rod
(Shown with optional engagement marking)



Confirm Engagement
(Pull down on rod to confirm engagement)

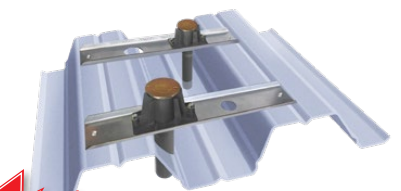
FSB-X - Flute Span Bracket

NEW One FSB-X Now Fit All Size PRSDI-2 Push Rods

Allows the SDI-2 to be installed on the inside of the flutes!

- Enables the insert to realize the higher capacity that is achieved in the upper flute
- Positions all inserts on the project at the same elevation to eliminate multiple threaded rod lengths
- Improves the accuracy of off site prefabrication

Part #	Description	Box Qty.
FSBX	Flute Span Bracket	25





PRPIP - Poured-In-Place

For Wood Formed Concrete Decks

Pour-in-Place inserts are used on wood form poured decks and installed prior to pouring concrete, reducing installation and material costs.

Multiple Internal Threads

- No threading - simply push rod (installs fast and secure)
- Fits both 3/8" and 1/2" threaded rod - reduces inventory
- Allows for threaded rod size changes
- Eliminate the need for, and cost of, couplings

Large Plastic Base with Slurry Seal

- Angled ridges protect the head of the insert from rebar during deck work
- Larger plastic base ensures that the insert is installed flush to the deck to prevent concrete from contaminating the inner threads during the pour
- Slurry seal safeguards the internal threads during the concrete pour
- Red, white and blue colored slurry seal labels identify the insert when used by multiple trades

Machined Steel Insert with Large Flanged Head and Nails

- Provides excellent shear values for overhead attachments
- Insert installed height of two inches complies with typical design specifications
- Nails easily break off



Before Hammer Blow

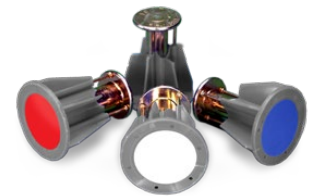


After Hammer Blow



Fits Both 3/8" and 1/2" Threaded Rod

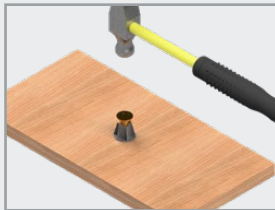
Red, White, and Blue Colored Slurry Seals Identify Trades



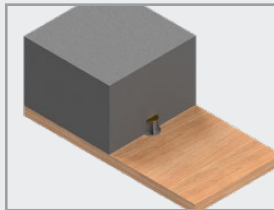
Part #	Rod Sizes	Description	Box Qty.
PRPIP3812RED	3/8", 1/2"	Poured-In-Place Insert	50
PRPIP3812WHITE	3/8", 1/2"	Poured-In-Place Insert	50
PRPIP3812BLUE	3/8", 1/2"	Poured-In-Place Insert	50

Add "BAA" to the end of the part number for the Buy American Act compliant insert

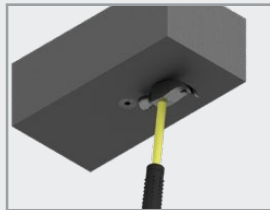
Easy Installation (See Installation Tools - Page 7)



Hammer to Wood Form



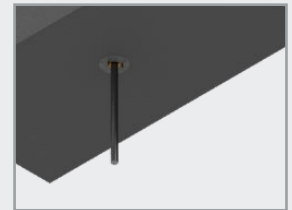
Pour Concrete



Remove Wood Form and Break Off Nails



Push Rod
(Shown with optional engagement marking)



Confirm Engagement
(Pull down on rod to confirm engagement)



55% Larger 2-3/8" Base Compared to Typical Competitor Small 1-5/16" - 1-1/2" Base



Angled Edges Help Prevent Damage Caused by Rebar



Slurry Seal Prevents Concrete Contamination



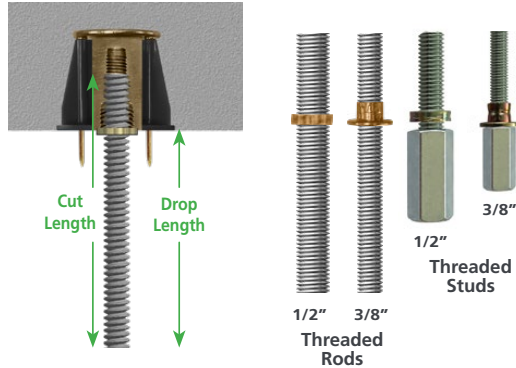
Single Rod Applications



Trapeze Applications

Push Rod - PRPIP3812

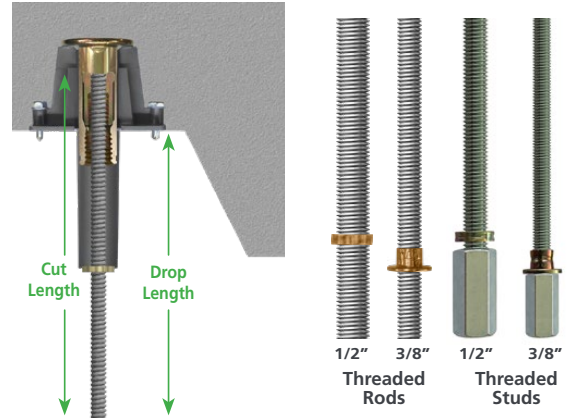
With Factory Crimped Engagement Mark



3/8" Threaded Rod with Engagement Markings for PRPIP3812		
QTY	Part Number	Description
	CEA-PRPIPR3824	PRPIP Threaded Rod - 3/8" x 24" (25-34")
	CEA-PRPIPR3836	PRPIP Threaded Rod - 3/8" x 36" (37-34")
	CEA-PRPIPR3848	PRPIP Threaded Rod - 3/8" x 48" (49-34")
	CEA-PRPIPR3860	PRPIP Threaded Rod - 3/8" x 60" (61-34")
	CEA-PRPIPR3872	PRPIP Threaded Rod - 3/8" x 72" (73-34")
	CEA-PRPIPR3884	PRPIP Threaded Rod - 3/8" x 84" (85-34")
	CEA-PRPIPR3896	PRPIP Threaded Rod - 3/8" x 96" (97-34")
	CEA-PRPIPR38108	PRPIP Threaded Rod - 3/8" x 108" (109-34")
	CEA-PRPIPR38118	PRPIP Threaded Rod - 3/8" x 118" (120")
1/2" Threaded Rod with Engagement Markings for PRPIP3812		
QTY	Part Number	Description
	CEA-PRPIPR1224	PRPIP Threaded Rod - 3/8" x 24" (25-34")
	CEA-PRPIPR1236	PRPIP Threaded Rod - 3/8" x 36" (37-34")
	CEA-PRPIPR1248	PRPIP Threaded Rod - 3/8" x 48" (49-34")
	CEA-PRPIPR1260	PRPIP Threaded Rod - 3/8" x 60" (61-34")
	CEA-PRPIPR1272	PRPIP Threaded Rod - 3/8" x 72" (73-34")
	CEA-PRPIPR1284	PRPIP Threaded Rod - 3/8" x 84" (85-34")
	CEA-PRPIPR1296	PRPIP Threaded Rod - 3/8" x 96" (97-34")
	CEA-PRPIPR12108	PRPIP Threaded Rod - 3/8" x 108" (109-34")
	CEA-PRPIPR12118	PRPIP Threaded Rod - 3/8" x 118" (120")
Custom Threaded Rod Lengths		
QTY	Part Number	
		Rod Diameter
	CEA-PRPIPR	Length (Inches)
	CEA-PRPIPR	
	CEA-PRPIPR	
Threaded Studs		
QTY	Part Number	Description
	CEA-PRPIPS3814	PRPIP Threaded Studs - 3/8" x 1/4"
	CEA-PRPIPS3838	PRPIP Threaded Studs - 3/8" x 3/8"
	CEA-PRPIPS1212	PRPIP Threaded Studs - 1/2" x 1/2"
	CEA-PRPIPS1258	PRPIP Threaded Studs - 1/2" x 5/8"

Push Rod - PRSDI3812-2

With Factory Crimped Engagement Mark



3/8" Threaded Rod with Engagement Markings for PRSDI3812-2			
QTY	Part Number	Description	
	CEA-PRSDI2-R3824	PRSDI2 Threaded Rod - 3/8" x 24" (25-34")	
	CEA-PRSDI2-R3836	PRSDI2 Threaded Rod - 3/8" x 36" (37-34")	
	CEA-PRSDI2-R3848	PRSDI2 Threaded Rod - 3/8" x 48" (49-34")	
	CEA-PRSDI2-R3860	PRSDI2 Threaded Rod - 3/8" x 60" (61-34")	
	CEA-PRSDI2-R3872	PRSDI2 Threaded Rod - 3/8" x 72" (73-34")	
	CEA-PRSDI2-R3884	PRSDI2 Threaded Rod - 3/8" x 84" (85-34")	
	CEA-PRSDI2-R3896	PRSDI2 Threaded Rod - 3/8" x 96" (97-34")	
	CEA-PRSDI2-R38108	PRSDI2 Threaded Rod - 3/8" x 108" (109-34")	
	CEA-PRSDI2-R38118	PRSDI2 Threaded Rod - 3/8" x 118" (120")	
1/2" Threaded Rod with Engagement Markings for PRSDI3812-2			
QTY	Part Number	Description	
	CEA-PRSDI2-R1224	PRSDI2 Threaded Rod - 3/8" x 24" (25-34")	
	CEA-PRSDI2-R1236	PRSDI2 Threaded Rod - 3/8" x 36" (37-34")	
	CEA-PRSDI2-R1248	PRSDI2 Threaded Rod - 3/8" x 48" (49-34")	
	CEA-PRSDI2-R1260	PRSDI2 Threaded Rod - 3/8" x 60" (61-34")	
	CEA-PRSDI2-R1272	PRSDI2 Threaded Rod - 3/8" x 72" (73-34")	
	CEA-PRSDI2-R1284	PRSDI2 Threaded Rod - 3/8" x 84" (85-34")	
	CEA-PRSDI2-R1296	PRSDI2 Threaded Rod - 3/8" x 96" (97-34")	
	CEA-PRSDI2-R12108	PRSDI2 Threaded Rod - 3/8" x 108" (109-34")	
	CEA-PRSDI2-R12118	PRSDI2 Threaded Rod - 3/8" x 118" (120")	
Custom Threaded Rod Lengths			
QTY	Part Number		
		Rod Diameter	Length (Inches)
	CEA-PRSDI2		
	CEA-PRSDI2		
	CEA-PRSDI2		
Threaded Studs			
QTY	Part Number	Description	
	CEA-PRSDI2-S3814	PRSDI2 Threaded Studs - 3/8" x 1/4"	
	CEA-PRSDI2-S3838	PRSDI2 Threaded Studs - 3/8" x 3/8"	
	CEA-PRSDI2-S1212	PRSDI2 Threaded Studs - 1/2" x 1/2"	
	CEA-PRSDI2-S1258	PRSDI2 Threaded Studs - 1/2" x 5/8"	



Revolutionary Push Rod Overhead Attachment System



***How do you increase field installation efficiency?
Use the Push Rod Overhead Attachment System!!!***

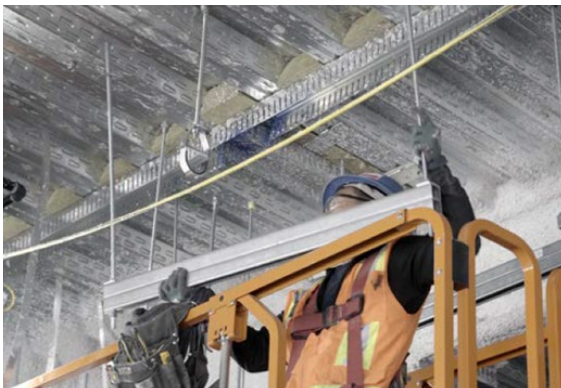


***Material Arrives to Jobsite Ready
for Installation***

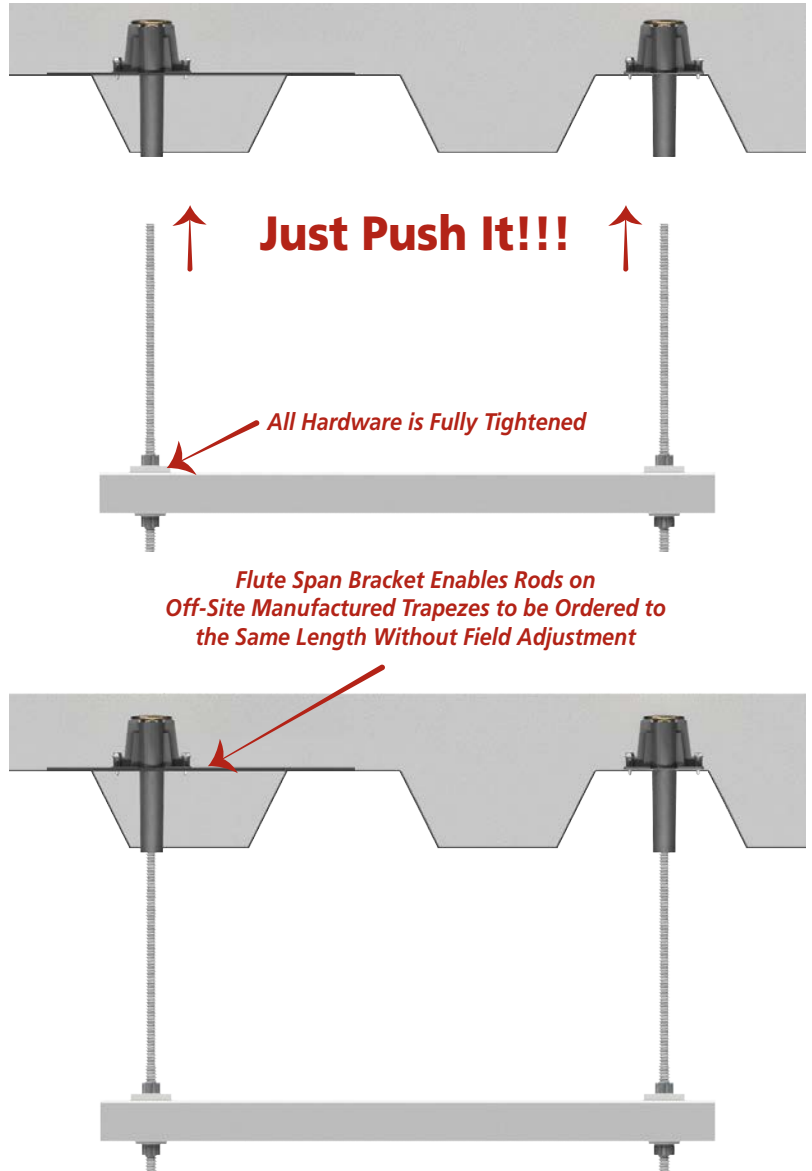
***Supports are Designed and Constructed to
the Industry's Highest Standards***



***Trapeze and Assemblies Labeled to
Correspond with Location Specific Drawings***



Just Push It!!!



Just Push It!!!

All Hardware is Fully Tightened

***Flute Span Bracket Enables Rods on
Off-Site Manufactured Trapezes to be Ordered to
the Same Length Without Field Adjustment***

When used in combination with Blue Banger Hanger Push Rod insert, installation is further streamlined by providing fast, safe, and toolless connection to the structure. Blue Banger Hanger inserts are code approved (ESR-3599) for a wide variety of materials and construction methods, offering a versatile solution that can be seamlessly integrated into virtually any project.

Engineered Factory Supports (EFS)

Every Support Engineered and Built to Address Vertical and Seismic Load Requirements

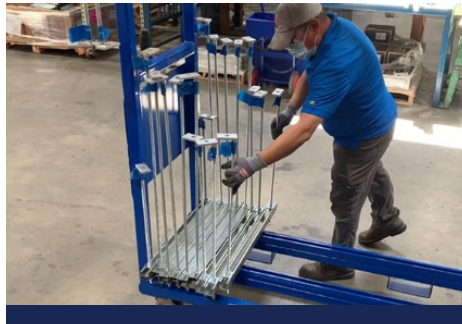
The American Society of Civil Engineers (ASCE) 7 and International Building Code (IBC) outline crucial seismic bracing requirements for mechanical, electrical, and plumbing systems, ensuring the safety and resilience of buildings during seismic events.

Code requires that every element of the supports load path is analyzed and engineered to resist the expected load conditions. This includes the construction of the single hung or trapeze support resisting the gravity (dead) loads, the seismic brace assemblies and rod stiffeners necessary to resist seismic loads, as well as the anchorage for attachment to structure.

As experts in the design and supply of Engineered Factory Supports (EFS), We totally support designs. Each support is in compliance with project and code requirements. We leverage cutting-edge technology and industry expertise to deliver MEP support solutions that are efficient, cost-effective, and tailored to our clients specific needs.



Assembly and Labeling



Quality Assurance



On-Site Material Handling

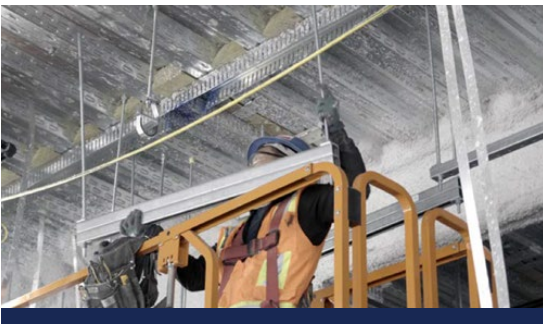


Rapid Rack System streamlines the on-site material handling process and greatly reduces the cost and time associated with the supports onto the jobsite and into the right location.



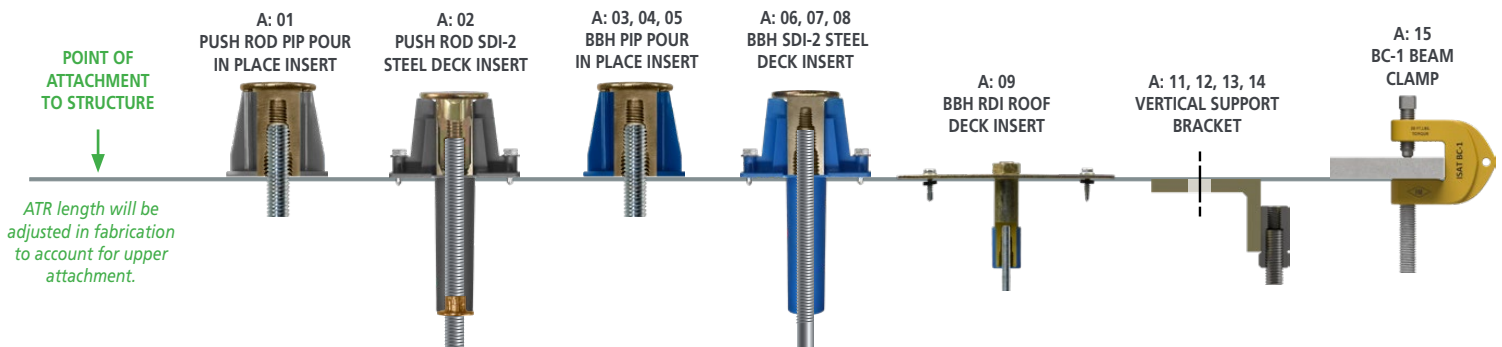
Revit Families
Available

- Revit Families Available (Contact Your Rep)
- Families are LOD 400 & Fully Parametric
- Extract Support Information Directly from Revit to Simplify the Ordering Process



When used in combination with Blue Banger Hanger Push Rod insert, installation is further streamlined by providing fast, safe, and toolless connection to the structure. Blue Banger Hanger inserts are code approved (ESR-3599) for a wide variety of materials and construction methods, offering a versatile solution that can be seamlessly integrated into virtually any project.

We take the guesswork out of fabricating the supports to the correct length. When using one of Structural Attachment solutions the ATR length will be adjusted in fabrication to account for the upper attachment being used.



BC-1 Single Sided Beam Clamp For Attachment to Structural Steel Members

The BC-1 Single Sided Beam Clamp is designed to quickly and easily attach EFS support assemblies to structural steel members. Its high strength design quickly and easily installs in all applications.



Fig. VSB - Vertical Support Bracket For At Post Post Installed Anchor Solution

The VSB bracket is designed to install supports in existing structures or on new construction when inserts can not be utilized. Its high strength design allows for the fully assembled support to be installed without the need for disassembly.



Part #	ATR Dia.	Nominal Anchor Dia.
VS83812-1438	3/8" and 1/2"	1/4" & 3/8"
VS83812-1258		1/2" & 5/8"
VS85834-1438	5/8" and 3/4"	1/4" & 3/8"
VS85834-1258		1/2" & 5/8"

■ Trapeze Supports

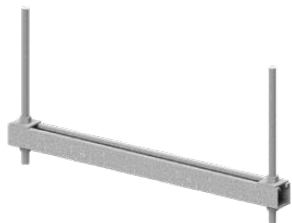


Fig. 2R1T
2 Rod - 1 Tier Rack
(Pg. 11)



Fig. 2R2T
2 Rod - 2 Tier Rack
(Pg. 12)



Fig. 2R3T
2 Rod - 3 Tier Rack
(Pg. 13)



Fig. 2R4T
2 Rod - 4 Tier Rack
(Pg. 14)



Fig. 3R1T
3 Rod - 1 Tier Rack
(Pg. 15)

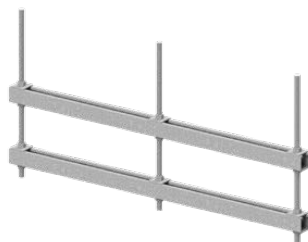


Fig. 3R2T
3 Rod - 2 Tier Rack
(Pg. 16)



Fig. 3R3T
3 Rod - 3 Tier Rack
(Pg. 17)



Fig. 3R4T
3 Rod - 4 Tier Rack
(Pg. 18)

■ Single Hung Supports



Fig. SH-BH
Band Hanger
(Pg. 19)



Fig. SH-CONH
Conduit Hanger
(Pg. 20)



Fig. SH-CLH
Clevis Hanger
(Pg. 21)

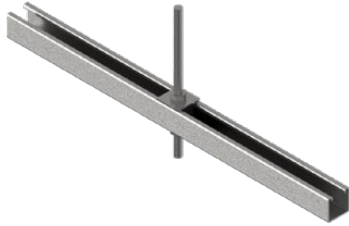


Fig. SH-RH
Roller Hanger
(Pg. 22)



Fig. SH-JH
J-Hanger
(Pg. 23)

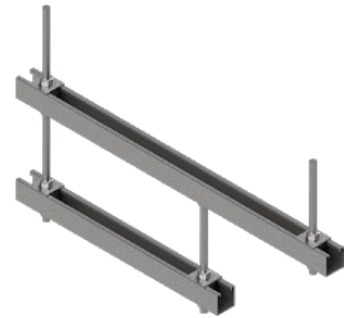
■ Strut Supports



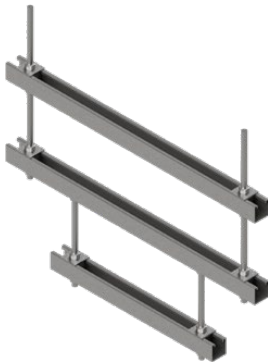
SS-1R1T-C
Strut Support
Trapeze Rack 1 Rod - 1 Tier - C



SS-2R2T-1DO
Strut Support Double Offset
Trapeze Rack 2 Rod - 2 Tier - 1 Offset



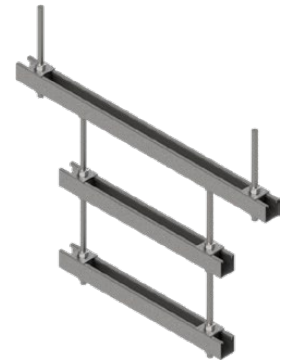
SS-2R2T-1O
Strut Support Offset
Trapeze Rack 2 Rod - 2 Tier - 1 Offset



SS-2R3T-1DO
Strut Support Double Offset
Trapeze Rack 2 Rod - 3 Tier - 1 Offset



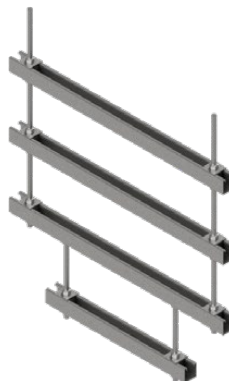
SS-2R3T-1O
Strut Support Offset
Trapeze Rack 2 Rod - 3 Tier - 1 Offset



SS-2R3T-2DO
Strut Support Double Offset
Trapeze Rack 2 Rod - 3 Tier - 2 Offset



SS-2R3T-2O
Strut Support Offset
Trapeze Rack 2 Rod - 3 Tier - 2 Offset



SS-2R4T-1DO
Strut Support Double Offset
Trapeze Rack 2 Rod - 4 Tier - 1 Offset

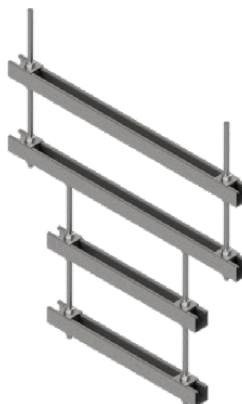


- Revit Families Available (Contact Your Rep)
- Families are LOD 400 & Fully Parametric
- Extract Support Information Directly from Revit to Simplify the Ordering Process

■ Strut Supports Continued



SS-2R4T-1O
Strut Support Offset
Trapeze Rack 2 Rod - 4 Tier - 1 Offset



SS-2R4T-2DO
Strut Support Double Offset
Trapeze Rack 2 Rod - 4 Tier - 2 Offset



Revit Families
Available

- Revit Families Available (Contact Your Rep)
- Families are LOD 400 & Fully Parametric
- Extract Support Information Directly from Revit to Simplify the Ordering Process



SS-2R4T-2O
Strut Support Offset
Trapeze Rack 2 Rod - 4 Tier - 2 Offset



SS-2R4T-3DO
Strut Support Double Offset
Trapeze Rack 2 Rod - 4 Tier - 3 Offset



SS-2R4T-3O
Strut Support Offset
Trapeze Rack 2 Rod - 4 Tier - 3 Offset

■ Strut Support Frames



SS-SF-1T
Strut Support Strut
Frame 2 Post - 1 Tier



SS-SF-2T
Strut Support Strut
Frame 2 Post - 2 Tier



SS-SF-3T
Strut Support Strut
Frame 2-Post-3-Tier

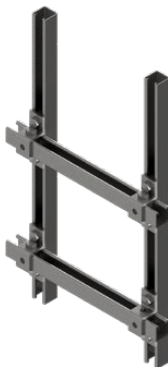


SS-SF-4T
Strut Support Strut
Frame 2-Post-4-Tier

■ Strut Support Frames Continued



SS-SMSF-1T
Strut Support Surface
Mounted Strut Frame
2 Post - 1 Tier



SS-SMSF-2T
Strut Support Surface
Mounted Strut Frame
2 Post - 2 Tier



SS-SMSF-3T
Strut Support Surface
Mounted Strut Frame
2 Post - 3 Tier

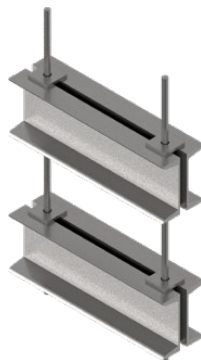


SS-SMSF-4T
Strut Support Surface
Mounted Strut Frame
2 Post - 4 Tier

■ Industrial Supports - C-Channel



IS-CCH-2R1T
Industrial Support C-Channel
Trapeze Rack 2 Rod - 1 Tier



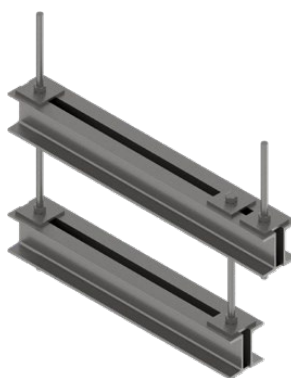
IS-CCH-2R2T
Industrial Support C-Channel
Trapeze Rack 2 Rod - 2 Tier



IS-CCH-3R1T
Industrial Support C-Channel
Trapeze Rack 3 Rod - 1 Tier



IS-CCH-3R2T
Industrial Support C-Channel
Trapeze Rack 3 Rod - 2 Tier

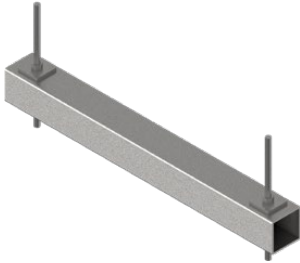


IS-CCH-2R2T-1O
Industrial Support Offset Trapeze
Rack 2 Rod - 2 Tier - 1 Offset

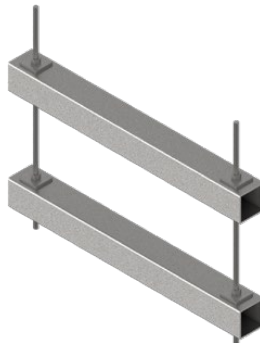


IS-CCH-2R2T-1DO
Industrial Support Double Offset
Trapeze Rack 2 Rod - 2 Tier - 1 Offset

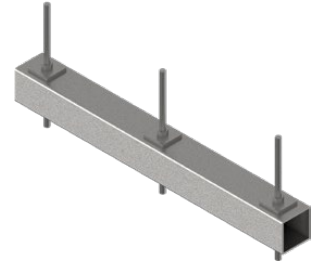
■ Industrial Supports - Hollow Structural Section



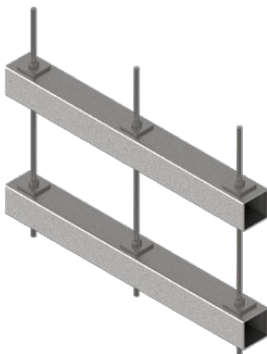
IS-HSS-2R1T
Industrial Support-HSS
Trapeze Rack 2 Rod - 1 Tier



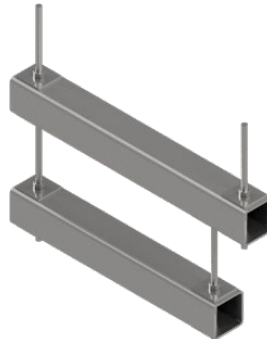
IS-HSS-2R2T
Industrial Support-HSS
Trapeze Rack 2 Rod - 2 Tier



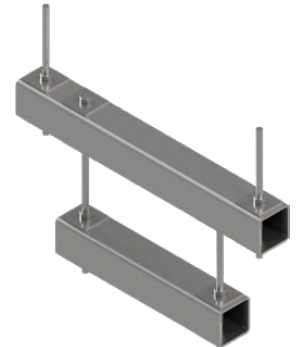
IS-HSS-3R1T
Industrial Support-HSS
Trapeze Rack 3 Rod - 1 Tier



IS-HSS-3R2T
Industrial Support-HSS
Trapeze Rack 3 Rod - 2 Tier



IS-HSS-2R2T-1O
Industrial Support-HSS Offset
Trapeze Rack 2 Rod - 2 Tier - 1 Offset



IS-HSS-2R2T-1DO
Industrial Support-HSS Double Offset
Trapeze Rack 2 Rod - 2 Tier - 1 Offset



Revit Families
Available

- Revit Families Available (Contact Your Rep)
- Families are LOD 400 & Fully Parametric
- Extract Support Information Directly from Revit to Simplify the Ordering Process

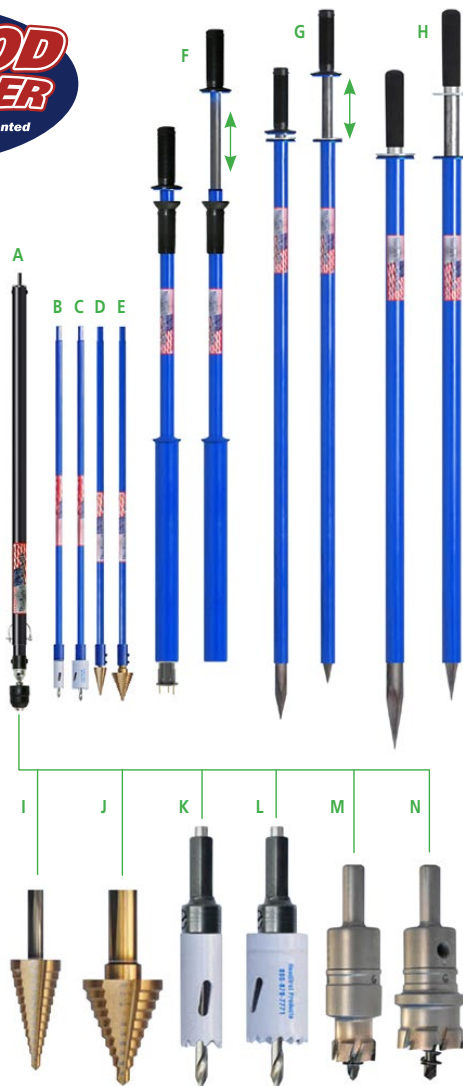


Installation Tools and Accessories

- Everything you need to make installation easy
- Increases productivity
- Better leverage reduces back and shoulder pain

Key	Part #	Description
A	POLMKEY36	3'-6' Telescoping Tool w/Keyless Chuck
B ¹	SDDHS1	30" Deck Driller with 13/16" Hole Saw
C ²	SDDHS2	30" Deck Driller with 1-3/16" Hole Saw
D ¹	SDDSB4	0" Deck Driller with 3/16 - 7/8" Step Bit
E ²	SDDSB5	30" Deck Driller with 1/4" - 1-3/8" Step Bit
F ³	PIPINSTALL1	Bazooka PIP Install Tool
F ⁴	PIPINSTALL2	Bazooka PIP Install Tool
G ¹	BBDP1	13/16" Deck Punch
H ²	BBDP2	1-3/16" Deck Punch
I ¹	SB4	3/16 - 7/8" Step Bit
J ²	SB5	1/4" - 1-3/8" Step Bit
K ¹	HS1	13/16" Hole Saw Only
L ²	HS2	1-3/16" Hole Saw Only
K & L	HSA	Arbor for Hole Saw Only
M ¹	HSC1	13/16" Carbide Tip Hole Saw Only
M ²	HSC2	1-3/16" Carbide Tip Hole Saw Only
M & N	HSCA	Arbor for Carbide Tip Hole Saw Only

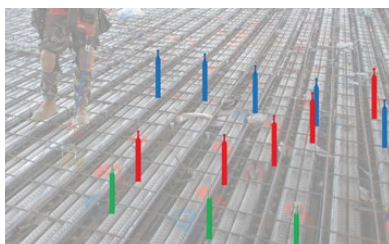
1 For use with SDI143812-2 and RDI143812
 2 For use with SDI381258-2 and SDI5834-2
 3 For use with PIP143812 only
 4 For use with PIP143812, PIP381258 and PIP5834



ID Tabs

- Saves time - quick installation
- Eliminates confusion between multiple trades
- Uses a marker or adhere labels
- Provides easy identification from the ground

Part #	Description
HEA-PT 38125A	Fluorescent Yellow
HEA-PT 38125B	Fluorescent Pink
HEA-PT 38125C	Fluorescent Blue
HEA-PT 38125D	Fluorescent Purple
HEA-PT 38125E	Fluorescent Red
HEA-PT 38125F	Fluorescent Orange
HEA-PT 38125G	White
HEA-PT 38125H	Green (Pms 354)
HEA-PT 38125I	Brown (Pms 469)
HEA-PT 38125J	Grey (Cool Grey)
HEA-PT 38125K	Grey (Cool Grey)
HEA-PT 38125L	Fluorescent Green

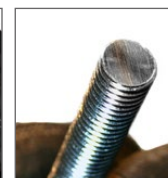


Threadfirst

- Easily remove burrs from ends of cut 1/4", 3/8" & 1/2" threaded rod
- Removable "T" handle allows the insert to be used with a drill



Part #	Description
THRD143812	Threadfirst Tool



Before

Threadfirst Tool

After



America's #1 Patented Deck Anchor Inserts

Concrete Steel Decks • Wood Formed Concrete Decks • No Concrete Steel Decks

US Pat #'s 6,240,697 B1 - 7,093,400 B1 - US 9,181,691 B2



Aerosmith Anchoring
(844)-373-2666
(844)- DreamOn
Fax: 914-817-0168

★ CORPORATE HEADQUARTERS

5621 Dividend Road,

Indianapolis, Indiana 46241

Phone: Toll Free 1-800-528-8183

For general inquiries contact: questions@aerosmithfastening.com

For online orders contact: [Customer_Service@](mailto:Customer_Service@aerosmithfastening.com)

aerosmithfastening.com

www.aerosmithfastening.com

Phone: Toll Free 1-844-373-2666

Aerosmith Anchoring
(844)-373-2666
(844)- DreamOn
Fax: 914-817-0168