

aerosmith[®]
fastening systems



STRENGTH DESIGN



aerosmith[®]
fastening systems

When only the best will do,
Aerosmith's Category 1, Code Compliant
Anchors for Cracked and Uncracked Concrete.



h[®]

"Providing quality fastening systems since 1967"

Aerosmith ICC Code Compliant Anchoring

Aerosmith's Anchoring Division is proud to present their ICC Category 1, Code Compliant range of mechanical and adhesive anchoring. This brochure highlights and contains the most popular anchors used in the construction industry, as well as, some of the latest innovations in both mechanical and adhesive anchoring. Our ICC-ES Listed products such as our Sure-Wedge™, Sure-Bolt™ and Sure-Set™ Adhesives, show our commitment to ensure that when code approved anchors are needed for specific job applications, Aerosmith has the product and the technical support to help you get the job done right.

In most parts of the world, communities have sets of rules for builders and other building trade professionals that govern construction practices and are intended to ensure that all aspects of building construction are safe and durable. The local codes may vary from location to location, but most are based on model codes that are created on a national or international level by committees or councils consisting of recognized trade professionals.

Strength Design Method

The strength design method considers the additional strength in the design analysis. This additional strength develops in the material due to strain hardening. This additional strength was not considered in other design analysis methods before and is now used for designing the reinforced concrete bar and threaded rods used in commercial construction applications. The designers are able to give more steel with the same area of concrete section and larger concrete area with reduced steel reinforcing when compared to design in allowable stress method.

In the design analysis using the strength design method, the loads acting on the structure are taken into consideration after multiplying them with load factor. The loads obtained after the multiplication of load factors are known as ultimate design loads. Load combinations are developed considering the occurrence of combination of loads.

Aerosmith Anchors provides performance data, as well as, ICC-ES evaluated products on their website for all of the anchoring products contained in this brochure. Please go to www.aerosmithfastening.com to view performance data or to download a copy of our ICC-ES listed reports.

Sure-Wedge™ Suitable for installation in **CRACKED CONCRETE, UNCRACKED CONCRETE, REINFORCED CONCRETE & STONE.**



Aerosmith's Sure Wedge™ are torque-controlled, mechanical expansion anchors consisting of an anchor body, expansion clip, nut and washer. The anchor body has a tapered mandrel formed on the installed end of the anchor and a threaded section at the opposite end. Suitable base materials include, normal weight concrete and lightweight concrete. The anchors are used to resist static; wind and seismic tension and shear loads in cracked and uncracked normal weight and lightweight concrete having a specific compressive strength of 2500 PSI to 8500 PSI. The anchor is manufactured with a zinc plated carbon steel body and sherardized clip that wraps around the mandrel, rotating freely before installation.

APPLICATIONS:

- Barriers
- Railings
- Warehouse racking
- Conveyor systems
- Machinery
- Signage
- Fence posts
- Shelving
- Windows
- Overhead doors
- Electrical pipes
- Light fixtures

FEATURES AND BENEFITS:

- Consistent performance in all types of concrete
- Drill size same as anchor size
- Easy and simple installation
- One piece design
- Comes complete with nuts and washers

BASE MATERIAL:

- Solid concrete
- Grout-filled masonry
- Hard stone

ANCHOR COMPONENT MATERIALS:

Carbon Steel Zinc Plated (body, nut, washer and expansion clip)

APPROVALS:

Category 1 Cracked & Uncracked Concrete ICC-ES ESR-4413
 IRC Listed 2006, 2009, 2012, 2015
 IRC Listed 2006, 2009, 2012, 2015
 CBC 2016 Listed
 CRC 2016 Listed
 LABC 2017 Listed
 LARC 2017 Listed
 FBC 2017 Listed
 FRC 2017 Listed



Part ID	Description	Overall Length	Diameter	Drill Diameter	Min. Embed	Max. Torque	Box Quantity	Carton Quantity
* WA14134CC	Wedge Anchor Zinc ICC 1/4" X 1-3/4"	1-3/4"	1/4"	1/4"	1-1/2"	4 ft lbs	100	600
* WA14214CC	Wedge Anchor Zinc ICC 1/4" X 2-1/4"	2-1/4"	1/4"	1/4"	2"	4 ft lbs	100	600
* WA14314CC	Wedge Anchor Zinc ICC 1/4" X 3 1/4"	3-1/4"	1/4"	1/4"	2"	4 ft lbs	100	600
* WA38214CC	Wedge Anchor Zinc ICC 3/8" X 2-1/4"	2-1/4"	3/8"	3/8"	2-1/3"	30 ft lbs	50	300
* WA38234CC	Wedge Anchor Zinc ICC 3/8" X 2-3/4"	2-3/4"	3/8"	3/8"	2-1/3"	30 ft lbs	50	300
WA38300CC	Wedge Anchor Zinc ICC 3/8" X 3"	3"	3/8"	3/8"	2-1/3"	30 ft lbs	50	300
WA38312CC	Wedge Anchor Zinc ICC 3/8" X 3-1/2"	3-1/2"	3/8"	3/8"	2-1/3"	30 ft lbs	50	300
WA38334CC	Wedge Anchor Zinc ICC 3/8" X 3-3/4"	3-3/4"	3/8"	3/8"	2-1/3"	30 ft lbs	50	300
WA38500CC	Wedge Anchor Zinc ICC 3/8" X 5"	5"	3/8"	3/8"	2-1/3"	30 ft lbs	50	300
WA38700CC	Wedge Anchor Zinc ICC 3/8" X 7"	7"	3/8"	3/8"	2-1/3"	30 ft lbs	50	50
* WA12234CC	Wedge Anchor Zinc ICC 1/2" X 2-3/4"	2-3/4"	1/2"	1/2"	2-1/3"	30 ft lbs	50	200
WA12334CC	Wedge Anchor Zinc ICC 1/2" X 3-3/4"	3-3/4"	1/2"	1/2"	2-1/3"	45 ft lbs	50	200
WA12412CC	Wedge Anchor Zinc ICC 1/2" X 4-1/2"	4-1/2"	1/2"	1/2"	2-1/3"	45 ft lbs	50	200
WA12512CC	Wedge Anchor Zinc ICC 1/2" X 5-1/2"	5-1/2"	1/2"	1/2"	2-1/3"	45 ft lbs	50	150
WA12700CC	Wedge Anchor Zinc ICC 1/2" X 7"	7"	1/2"	1/2"	2-1/3"	45 ft lbs	25	100
WA12100CC	Wedge Anchor Zinc ICC 1/2" X 10"	10"	1/2"	1/2"	2-1/3"	45 ft lbs	25	25
* WA58312CC	Wedge Anchor Zinc ICC 5/8" X 3-1/2"	3-1/2"	5/8"	5/8"	3-1/4"	75 ft lbs	25	100
WA58412CC	Wedge Anchor Zinc ICC 5/8" X 4-1/2"	4-1/2"	5/8"	5/8"	3-1/4"	75 ft lbs	25	100
WA58500CC	Wedge Anchor Zinc ICC 5/8" X 5"	5"	5/8"	5/8"	3-1/4"	75 ft lbs	25	100
WA58600CC	Wedge Anchor Zinc ICC 5/8" X 6"	6"	5/8"	5/8"	3-1/4"	75 ft lbs	25	75
WA58700CC	Wedge Anchor Zinc ICC 5/8" X 7"	7"	5/8"	5/8"	3-1/4"	75 ft lbs	25	75
WA58812CC	Wedge Anchor Zinc ICC 5/8" X 8-1/2"	8-1/2"	5/8"	5/8"	3-1/4"	75 ft lbs	25	50
* WA34414CC	Wedge Anchor Zinc ICC 3/4" X 4-1/4"	4-1/4"	3/4"	3/4"	3-3/4"	150 ft lbs	20	60
* WA34434CC	Wedge Anchor Zinc ICC 3/4" X 4-3/4"	4-3/4"	3/4"	3/4"	3-3/4"	150 ft lbs	20	60
WA34512CC	Wedge Anchor Zinc ICC 3/4" X 5-1/2"	5-1/2"	3/4"	3/4"	3-3/4"	150 ft lbs	20	60
WA34614CC	Wedge Anchor Zinc ICC 3/4" X 6-1/4"	6-1/4"	3/4"	3/4"	3-3/4"	150 ft lbs	20	60
WA34700CC	Wedge Anchor Zinc ICC 3/4" x 7"	7"	3/4"	3/4"	3-3/4"	150 ft lbs	20	60
WA34812CC	Wedge Anchor Zinc ICC 3/4" X 8-1/2"	8-1/2"	3/4"	3/4"	3-3/4"	150 ft lbs	10	40
WA34100CC	Wedge Anchor Zinc ICC 3/4" X 10"	10"	3/4"	3/4"	3-3/4"	150 ft lbs	10	40

Sure-Bolt™ Suitable for installation in **CRACKED CONCRETE, UNCRACKED CONCRETE, REINFORCED CONCRETE & STONE.**



The Aerosmith Sure Bolt™ is a one-piece, heavy duty screw anchor with a finished hex head. The anchor is manufactured from carbon steel and is heat treated. The Sure-Bolt™ is available in a variety of sizes from 1/4 to 3/4 inch. The hex head diameter is larger than the diameter of the anchor and is formed with serrations on the underside. The anchor can be installed in a pre-drilled hole with a powered impact wrench or a torque wrench. The anchor threads cut into concrete on the sides of the hole and interlock with the base material during the installation. Once installed they are easily identifiable by head markings with ASF on the head. Suitable base materials include normal weight concrete, and lightweight concrete. The anchor is designed for consistent and reliable performance in cracked and uncracked concrete.

APPLICATIONS:

- Structural anchoring in cracked and uncracked concrete, including industrial environments
- Glazing, windows and shop windows
- Industrial racking and conveyor systems
- Installation of railings and handrails in interiors applications
- Anchoring of machinery, boilers, signs, stadium seating, facade substructures, etc.
- Anchoring through wood into concrete base materials

APPROVALS:

Category 1 Cracked & Uncracked Concrete ICC-ES ESR-4414
 IBC Listed 2009, 2012, 2015, 2018
 IRC Listed 2009, 2012, 2015, 2018
 CBC 2016 Listed
 CRC 2016 Listed
 LABC 2017 Listed
 LARC 2017 Listed
 FBC 2017 Listed
 FRC 2017 Listed

FEATURES AND BENEFITS:

- Quick and easy installation
- Use in cracked and uncracked concrete
- Use for medium-heavy duty loads.
- Finished hex head
- Removable
- One piece assembly
- Variety of length and diameters
- Suitable when reduced distance to edge and between anchors is required
- Mechanical interlock between concrete and thread
- For static and quasi static loads
- Can be un-installed leaving the surface clear with no obstructions

BASE MATERIAL:

- Normal weight and lightweight concrete
- Reinforced concrete
- Cracked and uncracked concrete

ANCHOR COMPONENT MATERIALS:

Carbon Steel Body, Zinc Plated, with a hex washer head

Part ID	Description	Overall Length	Diameter	ANSI Drill Diameter	Min. Embed	Max. Torque	Box Quantity	Carton Quantity
* CB14114CC	1/4" x 1-1/4"	1-1/4"	1/4"	1/4"	1"	24 ft lbs	100	600
* CB14134CC	1/4" x 1-3/4"	1-3/4"	1/4"	1/4"	1-1/2"	24 ft lbs	100	600
* CB14214CC	1/4" x 2-1/4"	2-1/4"	1/4"	1/4"	1-5/8"	24 ft lbs	100	600
* CB14300CC	1/4" x 3"	3"	1/4"	1/4"	1-5/8"	24 ft lbs	100	500
* CB38134CC	3/8" x 1-3/4"	1-3/4"	3/8"	3/8"	1-1/2"	35 ft lbs	50	200
CB38212CC	3/8" x 2-1/2"	2-1/2"	3/8"	3/8"	2-1/4"	35 ft lbs	50	200
CB38300CC	3/8" x 3"	3"	3/8"	3/8"	2-1/2"	35 ft lbs	50	200
CB38400CC	3/8" x 4"	4"	3/8"	3/8"	2-1/2"	35 ft lbs	50	200
CB38500CC	3/8" x 5"	5"	3/8"	3/8"	2-1/2"	35 ft lbs	50	200
CB38600CC	3/8" x 6"	6"	3/8"	3/8"	2-1/2"	35 ft lbs	50	200
* CB12200CC	1/2" x 2"	2"	1/2"	1/2"	1-3/4"	35 ft lbs	50	100
* CB12212CC	1/2" x 2-1/2"	2-1/2"	1/2"	1/2"	2-1/4"	45 ft lbs	50	100
CB12300CC	1/2" x 3"	3"	1/2"	1/2"	2-3/4"	45 ft lbs	50	100
CB12400CC	1/2" x 4"	4"	1/2"	1/2"	3"	45 ft lbs	50	100
CB12500CC	1/2" x 5"	5"	1/2"	1/2"	3"	45 ft lbs	25	50
CB12600CC	1/2" x 6"	6"	1/2"	1/2"	3"	45 ft lbs	25	50
CB12800CC	1/2" x 8"	8"	1/2"	1/2"	3"	45 ft lbs	20	80
* CB58300CC	5/8" x 3"	3"	5/8"	5/8"	2-3/4"	85 ft lbs	25	50
CB58400CC	5/8" x 4"	4"	5/8"	5/8"	3-1/4"	85 ft lbs	25	50
CB58500CC	5/8" x 5"	5"	5/8"	5/8"	3-1/4"	85 ft lbs	25	50
CB58600CC	5/8" x 6"	6"	5/8"	5/8"	3-1/4"	85 ft lbs	20	40
CB58800CC	5/8" x 8"	8"	5/8"	5/8"	3-1/4"	85 ft lb	20	40
CB34400CC	3/4" x 4"	4"	3/4"	3/4"	3-3/4"	115 ft lbs	20	40
CB34500CC	3/4" x 5"	5"	3/4"	3/4"	4"	115 ft lbs	20	40
CB34600CC	3/4" x 6"	6"	3/4"	3/4"	4"	115 ft lbs	10	20
CB34800CC	3/4" x 8"	8"	3/4"	3/4"	4"	115 ft lbs	10	40
CB34100CC	3/4" x 10"	10"	3/4"	3/4"	4"	115 ft lbs	10	40

*This size is less than the required minimum standard anchor length for strength design



Manufactured in the USA

BABA: Buy America, Build America

Aerosmith® Sure-Set Plus+ Pure Epoxy

At Aerosmith® Fastening Systems, your health and safety on the construction site, is job one. That's why we ensure that all the adhesives we sell carry the highly recognized ICC-ES and Iamco Certified Approvals. What this means is that these products have gone through extensive and rigorous testing to not only ensure product quality, but more importantly when used appropriately, perform as intended with your safety and the safety of others at the forefront.

PRODUCT INFORMATION:

The PE-10 Plus+/PE-21 Plus+ is an injectable two component epoxy adhesive. The two components are kept separately by means of a labeled dual cylinder cartridge. The two components combine and react when dispensed through a static mixing nozzle supplied by Aerosmith Fastening Systems, which comes attached to each cartridge. Product is available in a 9.5- and 20.5- fluid ounce cartridge. This high-performance adhesive may be used in combination with a Manual, Battery or Pneumatic Dispensing Tool. It was specifically designed for the anchoring of threaded rods and reinforcing bars into Normal and Light weight concrete, brick, block and stone.



APPLICATIONS:

- Structural applications in cracked and uncracked concrete
- Pinning building façades
- Post installed rebar connections
- Crash barriers
- The attachment of structural steel to concrete
- Railings
- Signage
- Rebar doweling
- Sill plate attachments: suitable for horizontal, vertical and overhead anchoring applications.
- Cable trays
- Lighting Stanchions
- Conveyors
- Racking

BASE MATERIALS:

- Concrete
- Hard natural stone
- Solid rock
- Solid masonry

Part ID	Product	Cartridge size	Carton Quantity
Sure-Set PE-10 Plus+	Sure-Set® PE-10 Plus+	10 oz (8.5 fluid ounces)	12
Sure-Set PE-21 Plus+	Sure-Set® PE-21 Plus+	21 oz (21 fluid ounces)	12

IMPORTANT INFORMATION:

- ICC-ES Evaluated ESR-5901
- Two year shelf life when stored properly
- Certificated through WQA's Gold Seal program for drinking water system components
- For heavy anchoring and post-installed rebar connection
- Seismic rated
- Can be applied in dry, wet, submerged concrete or water filled bore holes
- High chemical resistance
- Low odor
- High bending and pressure strength
- Cartridge can be reused up to the end of the shelf life by either replacing the static mixer or resealing cartridge with the sealing cap

APPROVALS AND LISTING:

ICC-ES ESR-5901 Cracked and Uncracked Concrete Category 1
 Code Compliant IBC Listed (International Building Code)
 Code Compliant IRC Listed (International Residential Code)
 Code Compliant FBC Listed (Florida Building Code)
 Code Compliant FRC Listed (Florida Residential Code)
 Code Compliant COLA Listed (City of Los Angeles)
 Tested in accordance with AC308 and AC58 for use in structural concrete and masonry



Toll Free 844-373-2666

Sure-Set® ACR-10 and ACR-28 Plus+ Epoxy Acrylate

Aerosmith's Sure-Set® Epoxy Acrylate Plus+ adhesive anchors are specifically designed to resist static, wind or Seismic events. It is also ideally suited for high load and Heavy duty structural applications. It can be used with threaded rod, reinforcing bar, and steel dowels in solid base materials or in conjunction with an Aerosmith Stainless steel screen tube for hollow base anchoring applications. Sure Set Plus + has not only been evaluated by ICC-ES it has been fire tested and approved to be used with potable water carrying the WQA's Gold Seal of approval.

Suitable for use in **CRACKED AND UNCRACKED CONCRETE, CATEGORY 1.**

DESCRIPTION:

ACR10/28 Plus+ is an easy dispensing, rapid-curing, high strength anchoring adhesive which is formulated for use by trained professionals. Please refer to installation instructions and MSDS for additional detailed information.



APPLICATIONS:

- Structural Applications in Cracked and Uncracked
- Concrete
- Pinning Building Facades
- Post installed rebar connections
- Crash Barriers
- The attachment of Structural steel to concrete
- Railings
- Signage
- Rebar Doweling
- Sill plate attachments: suitable for horizontal, vertical and overhead anchoring applications
- cable trays
- Lighting Stanchions
- Conveyors
- Racking

IMPORTANT INFORMATION:

- ICC-ES Evaluated ESR-5945
- Two Year Shelf Life when stored properly
- Certificated through WQA's Gold Seal program for drinking water system components
- For heavy anchoring and post-installed rebar connection
- Seismic rated
- Can be applied in dry, wet, submerged concrete or water filled bore holes
- High chemical resistance
- Low odor
- High bending and pressure strength
- Cartridge can be reused up to the end of the shelf life by either replacing the static mixer or resealing cartridge with the sealing cap

APPROVALS AND LISTING:

- ICC-ESR-5945 for use in Cracked and Uncracked Concrete category 1
- IBC Listed (International Building Code)
- IRC Listed (International Residential Code)
- FBC Listed (Florida Building Code)
- FRC Listed (Florida Residential Code)
- COLA Listed (City of Los Angeles)
- Tested in accordance with AC308 and AC58 for use in structural concrete and masonry

BASE MATERIALS:

- Concrete
- Solid & hollow masonry
- Hard natural stone
- Solid rock
- Voided stone or roc

(If using in hollow base material applications, a stainless steel or nylon screen tube is required to encapsulate the adhesive)



Part ID	Product	Cartridge size	Carton Quantity
Sure-Set® ACR-10 Plus+	Sure-Set® ACR-10 Plus+	9.5 oz (280 ml)	12
Sure-Set® ACR-28 Plus+	Sure-Set® ACR-28 Plus+	27.9 oz (825 ml)	12

Toll Free 844-373-2666

aerosmith[®]
fastening systems

BLUE BANGER HANGER

CAST-IN-PLACE ANCHORS



oshpd



All reports listed below are owned by Tomarco /ISAT Construction Supplies



Blue Banger Hanger™ Steel Deck Insert

Blue Banger Hanger Steel Deck Inserts are installed prior to pouring concrete which reduces installation and material costs and increases strength values. The parts take multiple sizes of threaded rod, have a large flanged head, and a 3" plastic sleeve to help keep threads clean. An installation tool is also available to punch a hole through the metal deck for ease of installation. The parts are also seismically qualified for use in cracked concrete. Installation is quick and easy, punch hole through metal deck – insert blue banger hanger, apply pressure to head of anchor to lock in place and pour concrete.

APPLICATIONS:

- For hanging threaded rod in overhead applications
- Cable trays
- Fire sprinkler pipes
- Suspended conduit
- Suspended ceiling and lighting
- Telecommunication installations
- Water pipes (plumbing)
- HVAC

FEATURES AND BENEFITS:

- The Steel Deck Inserts installed height of just 2 inches can be used through or between the ribs of the deck
- Patented grooved insert body prevents component separation even if the flute is broken off prior to pour
- Reduces inventory so three inserts can accommodate five threaded rod sizes
- Allows for threaded rod size changes after inserts are installed
- Internal threads eliminate the need and cost of couplings
- Keeps internal threads clean
- Extended length makes insert easy to locate even with fireproofing on deck underside
- Plastic sleeve provides guidance to align threaded rod with matching internal female threads
- Positions all inserts on the project at the same elevation to eliminate multiple all thread rod lengths and improve the accuracy of offsite prefabrication

APPROVALS:

ICC-ES ESR-3599

UL Listed

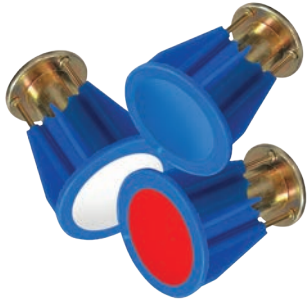
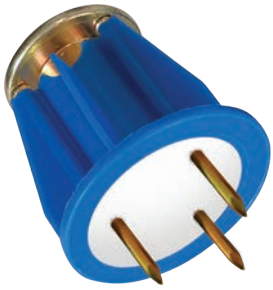
OSHPD



All reports listed below are owned by Tomarco /ISAT Construction Supplies



Part ID	Size	Box Quantity
HEA-SD1143812	1/4", 3/8", 1/2"	100
HEA-SD1381258	3/8", 1/2", 5/8"	50
HEA-SD15834	5/8", 3/4"	50
CEABBDP1 Install Tool	1/4" - 3/8"	1
CEABBDP2 Install Tool	3/8" - 5/8"	1



Blue Banger Hanger™ Pour In Place (PIP) Pour-in-Place Insert for the attachment of Threaded Rod

Pour-in-Place Inserts are used on wood form poured decks and installed prior to pouring concrete which reduces installation and material costs. Blue Banger Hanger PIP's are easy to use just strike the top of the hanger and drive the three mounting nails into the forming material until the bottom of the hanger is flush with the plywood. The hanger should be sitting 90 degrees perpendicular to the forming material. Once concrete is hardened, and forms are stripped, strike the mounting nails to break them off, it's that simple.

APPLICATIONS:

- For hanging threaded rod in overhead applications
- Cable trays
- Fire sprinkler pipes
- Suspended conduit
- Suspended ceiling and lighting
- Telecommunication installations
- Water pipes (plumbing)
- HVAC

FEATURES AND BENEFITS:

- Provides excellent shear values for overhead attachments
- Reduces inventory so three inserts can accommodate five threaded rod sizes
- Allows for threaded rod size changes after inserts are installed
- Internal threads eliminate the need and cost of couplings
- Blue plastic ring acts as insert locator when forms are removed
- Plastic ring creates countersunk recess to keep threads clean from pour residue

APPROVALS:

ICC-ES ESR-3599
UL Listed
OSHPD



All reports listed below are owned by Tomarco /ISAT Construction Supplies

NEW SLURRY SEAL:

- Slurry seal safeguards the internal threads from concrete during the pour
- Red, white and blue colored slurry seal labels identify the insert when used by multiple trades
- Does not catch rod threads or interfere with rod size changes
- Won't fall out like foam inserts



MULTI-THREAD SUPPORT:

- Multi-thread inserts reduce inventory - Compare to similar products who have as many as five insert sizes, one for each size
- Easily change rod sizes after the install - Not possible with single size inserts
- Slurry seal does not interfere with rod size changes, compare to similar products that are difficult to break plastic or foam inserts that tangle

Part ID	Size	Box Quantity
HEA-PIP143812	1/4", 3/8", 1/2"	200
HEA-PIP381258	3/8", 1/2", 5/8"	150
HEA-PIP5834	5/8" - 3/4"	50
CEA-PIPInstall1 Tool	1/4", 3/8", 1/2"	1
CEA-PIPInstall2 Tool	5/8" - 3/4"	1

Why Sure-Set PE-10 and PE-21 Plus+?

Sure-Set® PE-10 and PE-21 Plus+ is a domestically made, two-part cartridge adhesive designed specifically for DOT, bridge and transportation infrastructure work—giving distributors a code compliant, in-demand solution to offer contractors working on federally funded projects.

Sure-Set® Plus+ meets the Buy America, Build America (BABA) requirements, allowing contractors to confidently use it on federally funded Transportation and Bridge projects.

ICC-ES listed for use in Cracked and Uncracked Concrete Category 1! The highest rating for reliability.

Great for a variety of DOT (Department of Transportation) projects that may require Bridge repairs, Guard rail installations, Signage, retrofits, concrete and rebar doweling, lighting stantions and more.



Why Distributors are Stocking Sure-Set® PE-10 and PE-21 Plus+

Built specifically for Federally Funded Projects

Strong Market Demand A Competitive Advantage for Your Line Card

New Formulation for easy dispensing

Available in:
10 Ounce cartridges
21 Ounce cartridges

Fits most competitors
Dispensing tools

Contact us for distributor pricing
product training materials
and technical documentation
Let us help you
grow your adhesive business

aerosmith®

fastening systems


revised date 06/24/26



"Providing quality fastening systems since 1967"




 www.aerosmithfastening.com

 Toll Free (844) 373-2666

 info@aerosmithfastening.com

 5621 Dividend Road • Indianapolis, Indiana 46241

 (914)-817-0168